

CURVE DATA				
CURVE	RADIUS	ARC DISTANCE	CHORD DISTANCE	CHORD BEARING
C1	234.07	46.31	46.24	282°26'12"
C2	234.07	10.00	10.00	275°32'39"
C3	86.46	91.34	87.15	233°27'20"
C4	39.60	32.94	32.00	355°23'23"
C5	36.17	35.96	34.50	352°46'44"
C6	36.17	46.06	43.01	237°45'00"
C7	36.17	32.93	31.80	300°19'12"
C8	41.11	32.87	32.00	288°20'42"
C9	254.07	27.52	27.26	277°46'21"
C10	254.07	10.30	10.30	282°02'13"
C11	254.07	21.76	21.75	285°38'05"

Adjusted UTM Coordinates NAD83 (CSRS), UTM Zone 11		
Coordinates were derived from real-time kinematic GPS observations with a base station at monument 103.		
MONUMENTS	NORTHING	EASTING
102	5739563.633	386724.147
103	5739230.711	386628.951
108	5739106.456	387206.093
110	5739403.393	387288.522

This specimen plan is to depict a partial survey pursuant to subparagraph 8(b) ii) of Chapter D5.

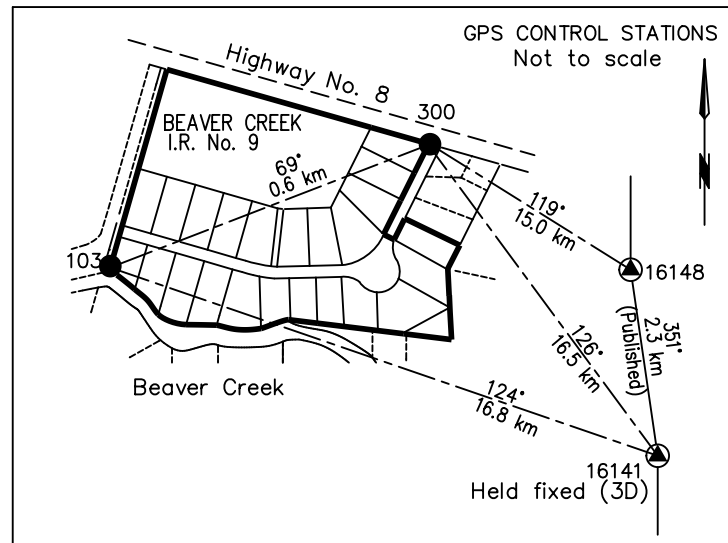
This plan shows:

- * a subdivision survey where some lots are partially monumented;
- * connection to NAD83CSRS using GPS observations. New ties to NAD 83 CSRS are optional in this survey because of previous connections on Specimen Plan No 1; and
- * real time kinematic observations

Adjusted UTM Coordinates - GPS Control Stations NAD83 (CSRS), Zone 11				
STATION	NORTHING	EASTING	COMBINED SCALE FACTOR	ELEVATION
16141*	5729718.508	400539.245	0.999684	238.52**
16148	5732039.963	400200.560	0.999685	238.15
300	5739437.746	387167.534	0.999719	239.09
103	5739230.711	386628.951	0.999721	236.88

* Coordinates were derived from a least squares adjustment of static GPS observations holding the published values of geodetic control station 16141 fixed

** Elevations are orthometric heights derived from the published orthometric height of Monument 16141



CANADA LANDS SURVEYS RECORDS
8 9 5 0 0
DATE : September 20, 2004

REGISTRATION PLAN -
PARTIAL SURVEY

SPECIMEN ONLY

PLAN OF
LOTS 20-1-1 TO 20-1-25 AND 20-1-26 (ROAD)
AND R/W OVER LOT 20-1-9
BEAVER CREEK INDIAN RESERVE No. 9
AND FIELD NOTES OF SURVEY

(LOCATION DESCRIPTION)
(SEE APPENDIX E3, GUIDE FOR PREPARATION OF PLANS)

SCALE 1:2000
40 20 0 50 100 150 METRES

THIS SURVEY WAS EXECUTED DURING THE PERIOD OF JULY 14 TO JULY 16, 2004 BY (Surveyor) C.L.S.

LEGEND
Bearings are NAD83 (CSRS) UTM grid derived from GPS observations holding Geodetic Control Monument 16141 fixed in 3D and are referred to the central meridian of UTM Zone 11 (117° West).
Distances shown are horizontal at general ground level and are expressed in metres and decimals thereof.
To compute UTM coordinates, distances should be reduced to sea level and the projection plane by multiplying the appropriate combined scale factor shown in the GPS Control Stations Table.
All monument placed during this survey are marked with the unique identification number as indicated on the plan and the year of the survey (2004).
Real time kinematic GPS observations were used to derive part of this survey.

Geodetic control monument.....
C.L.S. standard post found
Old pattern iron post found
Provincial Iron Post found
Provincial Iron Post placed
Lands dealt with by this plan bounded thus.....
Ties.....

RE: Section 38, Canada Lands Surveys Regulations
CERTIFIED CORRECT

On the _____ day of _____ 2004

(Surveyor) C.L.S.

Department of Natural Resources
RE: Section 31, Canada Lands Surveys Act
and Framework Accord (December 2003)

APPROVED

(Appropriate name and title to be inserted here) DATE
Surveyor General or designate
(Appropriate Region)
Canada Centre for Cadastral Management

Project : 200_ - XX - XXX
File : SM8210 - XXXXX

