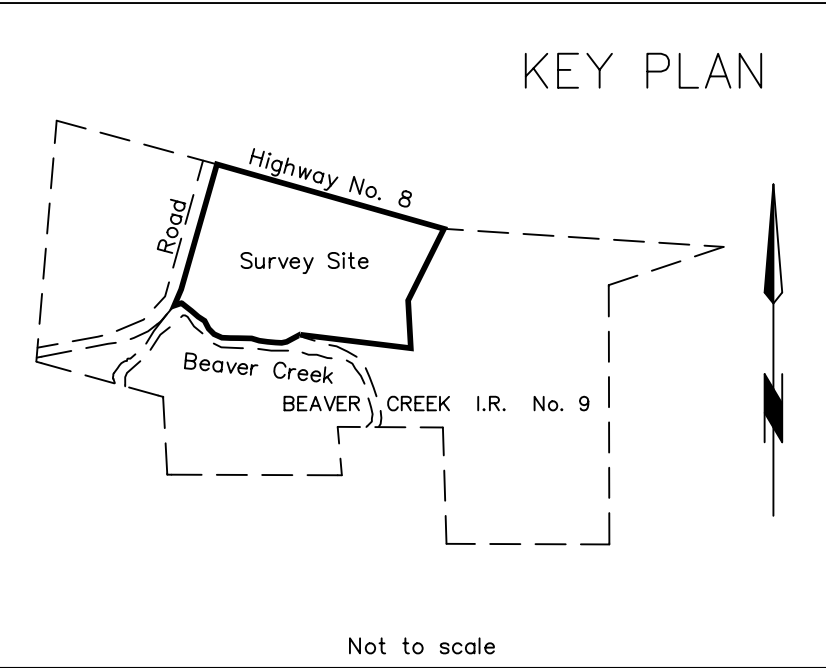


2 cm

2 cm



Adjusted UTM Coordinates
NAD83 (CSRS), UTM Zone 11

MONUMENTS	NORTHING	EASTING
101	5739566.491	386714.189
106	5739233.733	386619.043
108	5739106.456	387206.093
110	5739403.393	387288.522

OHWM TIES
GPS Kinematic relative positioning
techniques were used to locate the OHWM
Control station # 106 was used as base station

	NORTHING	EASTING
199	5739254.5	386652.7
200	5739227.5	386622.9
201	5739212.3	386644.3
202	5739185.3	386677.7
203	5739174.1	386691.6
204	5739156.0	386704.3
205	5739142.8	386717.4
206	5739134.0	386736.8
207	5739130.2	386810.8
208	5739123.4	386849.7
209	5739126.7	386886.2
210	5739140.6	386927.1
211	5739129.6	386949.4

(OPTIONAL)
(Surveyor) C.L.S.
(Address)
TEL : 000-000-0000
FAX : 000-000-0000
FILE No. XXXX

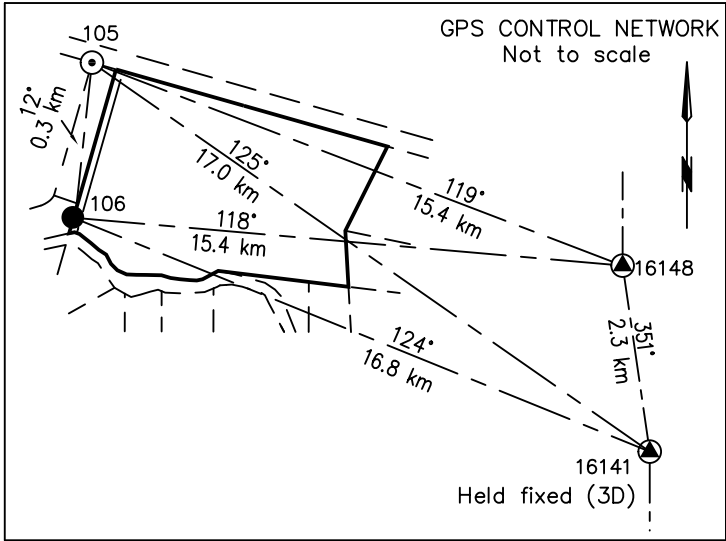
This specimen plan is to depict a full survey pursuant to subparagraph 8(c) of Chapter D5.

This plan shows:
* a consolidation survey;
* connection to NAD 83 CSRS using GPS observations.

Adjusted UTM Coordinates - GPS Control Stations
NAD83 (CSRS), Zone 11

STATION	NORTHING	EASTING	COMBINED SCALE FACTOR	ELEVATION
16141*	5729718.508	400539.245	0.999684	238.52**
16148	5732039.963	400200.560	0.999685	238.15
105	5739571.990	386694.826	0.999721	237.08
106	5739233.733	386619.043	0.999721	237.39

* Denotes published value of Provincial Geodetic Control Monument
** Elevations are orthometric heights derived from the published orthometric height of Monument 16141



CANADA LANDS SURVEYS RECORDS

8 8 5 0 0

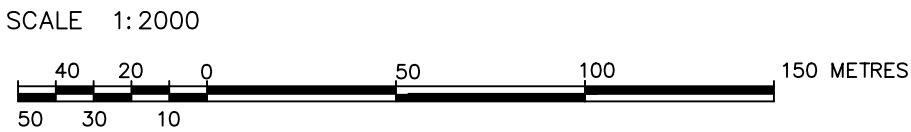
DATE : March 3, 2004

REGISTRATION PLAN -
FULL SURVEY

S P E C I M E N O N L Y

PLAN AND FIELD NOTES
OF SURVEY OF
LOTS 20 AND 21 (ROAD)
BEAVER CREEK INDIAN RESERVE No. 9

(LOCATION DESCRIPTION)
(SEE APPENDIX E3, GUIDELINES FOR PREPARATION OF PLANS)



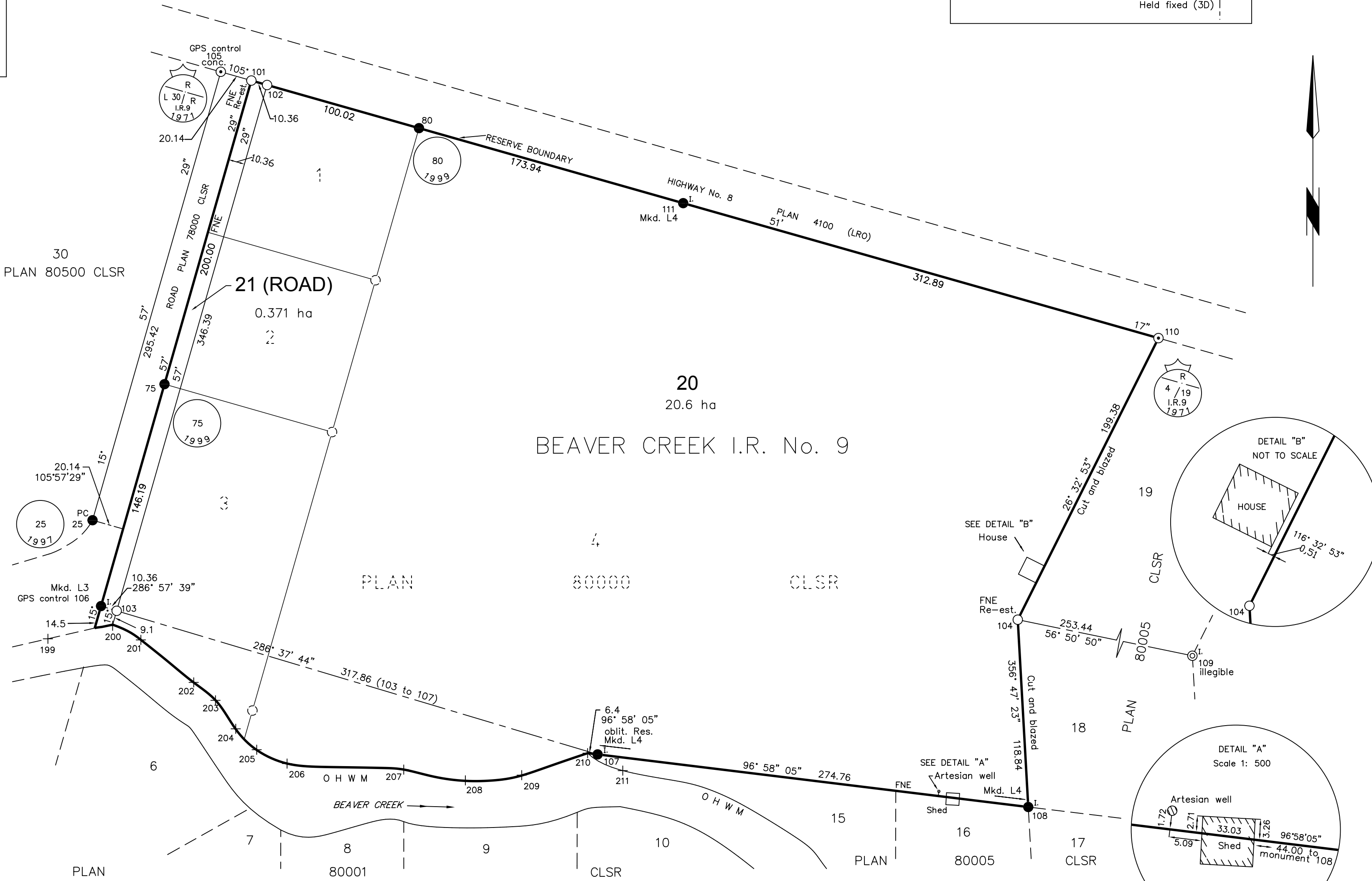
THIS SURVEY WAS EXECUTED DURING THE PERIOD OF JANUARY 6 TO
JANUARY 10, 2004 BY (Surveyor) C.L.S.

Lots 20 and 21 (Road) as shown on this plan comprise Lots 1, 2, 3 and 4
as shown on Plan 80000 CLSR.

LEGEND

Bearings are NAD83 (CSRS) UTM grid derived from differential carrier phase GPS observations
Holding geodetic Control Monument 16141 fixed in 3D and are referred to the central meridian
of UTM Zone 11 (117° West).
Distances shown are horizontal at general ground level and are expressed in metres and
decimals thereof.
To compute UTM coordinates, distances should be reduced to sea level and the projection plane
by multiplying the appropriate combined scale factor shown in the table of coordinates.
All monuments placed during this survey are marked with the unique identification number
as indicated on the plan and the year of the survey (2004).
All monuments are accompanied by treated wooden posts 0.04x0.09x0.80.
Coordinates shown on this plan derived from a least square adjustment of GPS and
conventional observations holding the published values of geodetic control station 16141 fixed.

Geodetic control monument PLACED FOUND REMOVED
C.L.S. standard post
Old pattern iron post
Provincial Iron Post
Lands dealt with by this plan bounded thus.....
Ties.....



RE: Section 38, Canada Lands Surveys Regulations
CERTIFIED CORRECT

On the _____ day of _____ 2004

(Surveyor) C.L.S.

Department of Natural Resources
RE: Section 31, Canada Lands Surveys Act
and Framework Accord (December 2003)

APPROVED

(Appropriate name and title to be inserted here) DATE
Surveyor General or designate
(Appropriate Region)
Canada Centre for Cadastral Management

Project : 200_ - XX - XXX
File : SM8210 - XXXXX