

SPECIMEN ONLY

PLAN AND FIELD NOTES
 OF SURVEY OF
 THE EXTERIOR BOUNDARIES OF
TROUT LAKE INDIAN RESERVE No.22
 (LOCATION DESCRIPTION)
 (SEE APPENDIX B3, GUIDELINES FOR PREPARATION OF PLANS)

SCALE 1:1000
 metres 30 20 10 0 30 metres

THIS SURVEY WAS EXECUTED DURING THE PERIOD OF MARCH 19 TO MARCH 21, 2010
 BY (Surveyor) C.L.S. (Provincial Commission)

LEGEND
 Bearings are MTM grid derived from the calculated bearing 90°46'33" between station 200 and station 201 and are referred to the central meridian MTM Zone 9 (76°30' West) NAD83, (CSRS) datum.
 Distances shown are horizontal at general ground level and are expressed in metres and decimals thereof.
 To compute MTM coordinates, distances must be reduced to the projection plane by multiplying by the combined scale factor 0.999623.
 All monuments placed according to field notes of survey 00000 CLSR are marked with the unique identification number indicated on the plan, the year "2010" and "I.R.", where applicable.
 Pressure treated marker posts (0.1x0.1x1.20) were placed adjacent to all monuments and marked with the lot number and "I.R.". Support information for this survey are contained in supplementary fields notes and survey report recorded under FB 00000 CLSR.

LEGEND
 C.L.S. standard post found ○
 Provincial iron post placed (specify type) ○
 Provincial iron post found (specify type) ●
 Old pattern iron bar found ●
 GPS control station placed (20 cm Spike) ⊕
 Reserve Boundary dealt with by this plan. - - - - -
 Connections - - - - -

RE: Section 38, Canada Lands Surveys Regulations
 CERTIFIED CORRECT
 On the ____ day of ____ 2010
 (Surveyor) C.L.S. (Provincial Commission)

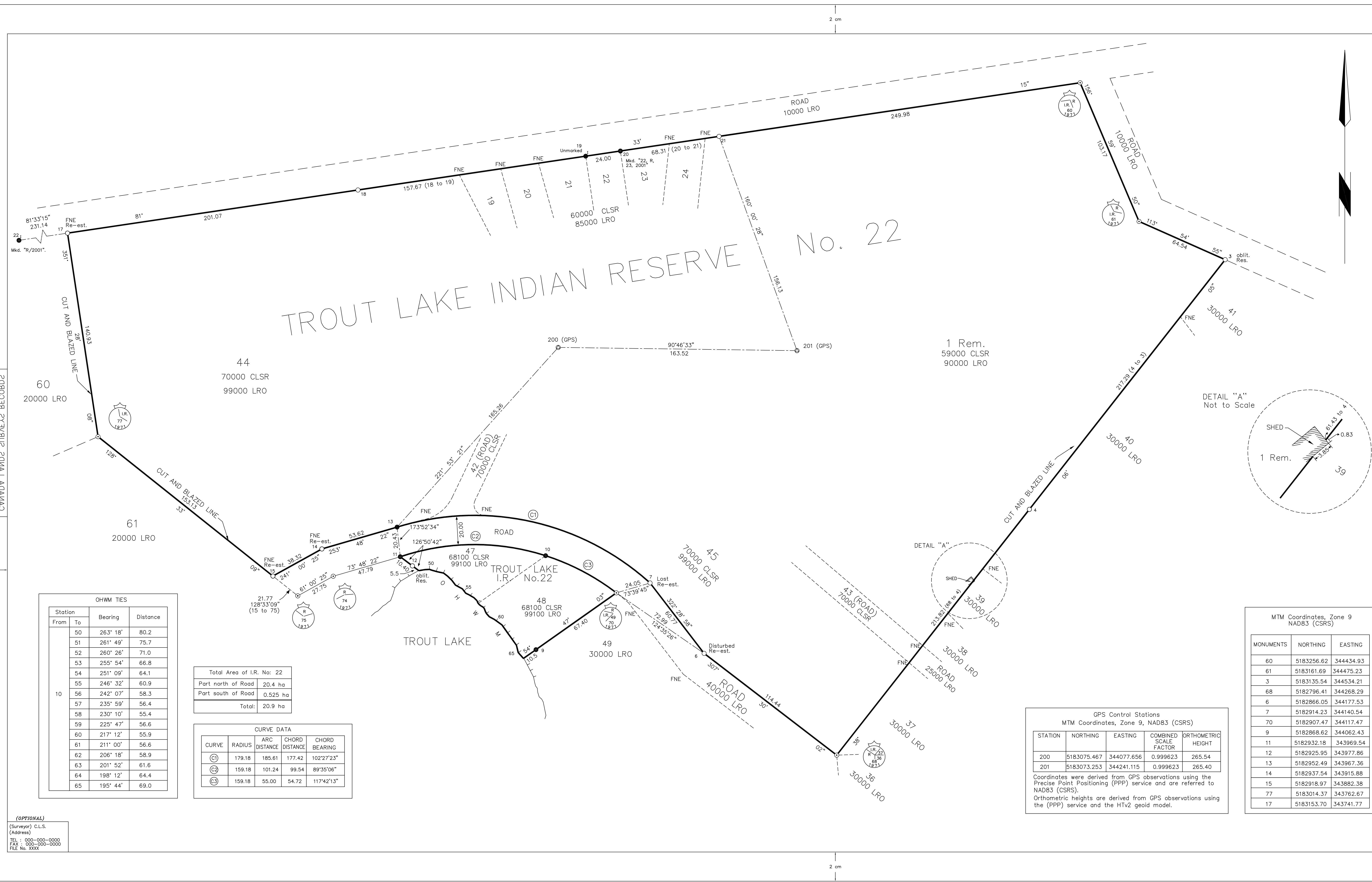
Department of Natural Resources
 RE: Section 29, Canada Lands Surveys Act
 and Framework Accord (February 2009)
 CONFIRMED
 (Appropriate name and title to be inserted here) DATE
 Surveyor General or designate
 (Appropriate Region)
 Surveyor General Branch

Department of Indian Affairs and Northern Development
 RE: Section 29, Canada Lands Surveys Act
 and Framework Accord (February 2009)
 THIS PLAN IS SATISFACTORY
 (Appropriate name and title to be inserted here) DATE
 Manager, Lands
 (Appropriate Region)

(Appropriate name and title to be inserted here) DATE
 Deputy Registrar, Surveys
 Indian Lands, Gatineau, Quebec

ON BEHALF OF THE MINISTER

Project : 201 - XX - XXX
 File : S482X1 - XXXXX
 Checklist : XXX



OHWM TIES

Station From	To	Bearing	Distance
50	263' 18"	80.2	
51	261' 49"	75.7	
52	260' 26"	71.0	
53	255' 54"	66.8	
54	251' 09"	64.1	
55	246' 32"	60.9	
56	242' 07"	58.3	
57	235' 59"	56.4	
58	230' 10"	55.4	
59	225' 47"	56.6	
60	217' 12"	55.9	
61	211' 00"	56.6	
62	206' 18"	58.9	
63	201' 52"	61.6	
64	198' 12"	64.4	
65	195' 44"	69.0	

Total Area of I.R. No: 22
 Part north of Road 20.4 ha
 Part south of Road 0.525 ha
 Total: 20.9 ha

CURVE DATA

CURVE	RADIUS	ARC DISTANCE	CHORD DISTANCE	CHORD BEARING
Ⓢ	179.18	185.61	177.42	102°2'23"
Ⓢ	159.18	101.24	99.54	89°15'06"
Ⓢ	159.18	55.00	54.72	117°42'13"

GPS Control Stations
 MTM Coordinates, Zone 9, NAD83 (CSRS)

STATION	NORTHING	EASTING	COMBINED SCALE FACTOR	ORTHOMETRIC HEIGHT
200	5183075.467	344077.656	0.999623	265.54
201	5183073.253	344241.115	0.999623	265.40

Coordinates were derived from GPS observations using the Precise Point Positioning (PPP) service and are referred to NAD83 (CSRS).
 Orthometric heights are derived from GPS observations using the (PPP) service and the HTv2 geoid model.

MTM Coordinates, Zone 9
 NAD83 (CSRS)

MONUMENTS	NORTHING	EASTING
60	5183256.62	344434.93
61	5183161.69	344475.23
3	5183135.54	344534.21
68	5182796.41	344268.29
6	5182866.05	344177.53
7	5182914.23	344140.54
70	5182907.47	344117.47
9	5182868.62	344062.43
11	5182932.18	343969.54
12	5182925.95	343977.86
13	5182952.49	343967.36
14	5182937.54	343915.88
15	5182918.97	343882.38
77	5183014.37	343762.67
17	5183153.70	343741.77

(OPTIONAL)
 (Surveyor) C.L.S.
 (Address)
 TEL : 000-000-0000
 FAX : 000-000-0000
 REG. No. XXX