

SPECIMEN ONLY

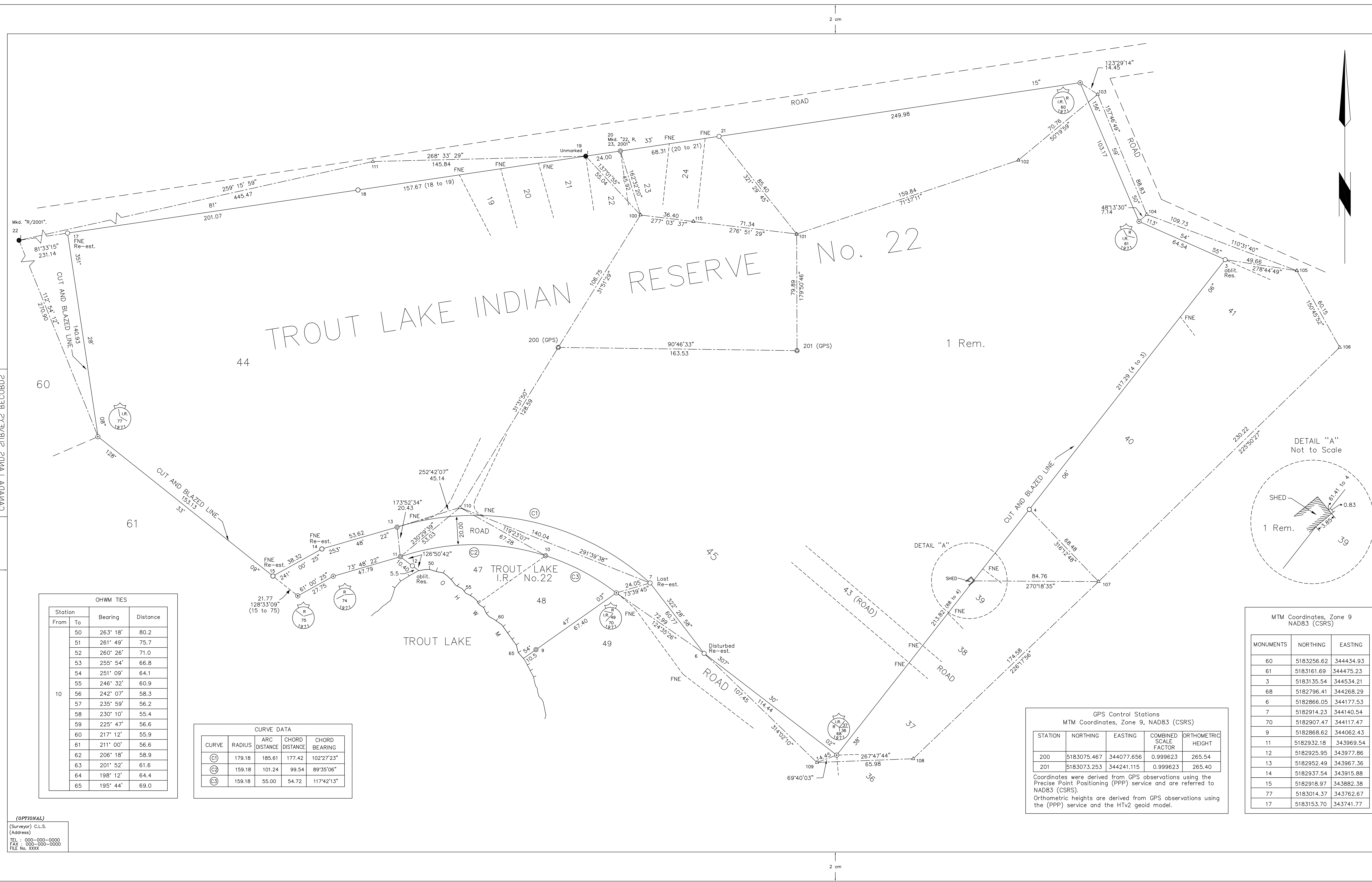
FIELD NOTES  
OF SURVEY OF  
THE EXTERIOR BOUNDARIES OF  
TROUT LAKE INDIAN RESERVE No. 22  
(LOCATION DESCRIPTION)  
(SEE APPENDIX B3, GUIDELINES FOR PREPARATION OF PLANS)

SCALE 1:1000  
metres 30 20 10 0 30

THIS SURVEY WAS EXECUTED DURING THE PERIOD OF MARCH 19 TO MARCH 21, 2010  
BY (Surveyor) C.L.S. (Provincial Commission)

**LEGEND**  
Bearings are MTM grid derived from the calculated bearing 90°46'33" between station 200 and station 201 and are referred to the central meridian MTM Zone 9 (76°30' West) NAD83 (CSRS) Datum.  
Distances shown are horizontal at general ground level and are expressed in metres and decimals thereof.  
To compute MTM coordinates, distances must be reduced to the projection plane by multiplying by the combined scale factor 0.999623.  
All monuments placed according to field notes of survey 00000 CLSR are marked with the unique identification number indicated on the plan, the year "2010" and "I.R.", where applicable.  
Pressure treated marker posts (0.1x0.1x1.20) were placed adjacent to all monuments and marked with the appropriate lot number and "I.R.". Support information for this survey is contained in supplementary fields notes and survey report recorded under FB 00000 CLSR.

**LEGEND**  
C.L.S. standard post found ..... O  
Provincial iron post placed (specify type) ..... O  
Provincial iron post found (specify type) ..... O  
Old pattern iron bar found ..... O  
GPS control station placed (20 cm spike) ..... O  
Ties and traverse line ..... -  
Traverse station ..... Δ



**OHWM TIES**

Station From	To	Bearing	Distance
50	263' 18"	80.2	
51	261' 49"	75.7	
52	260' 26"	71.0	
53	255' 54"	66.8	
54	251' 09"	64.1	
55	246' 32"	60.9	
56	242' 07"	58.3	
57	235' 59"	56.2	
58	230' 10"	55.4	
59	225' 47"	56.6	
60	217' 12"	55.9	
61	211' 00"	56.6	
62	206' 18"	58.9	
63	201' 52"	61.6	
64	198' 12"	64.4	
65	195' 44"	69.0	

**CURVE DATA**

CURVE	RADIUS	ARC DISTANCE	CHORD DISTANCE	CHORD BEARING
(1)	179.18	185.61	177.42	102°2'23"
(2)	159.18	101.24	99.54	89°35'06"
(3)	159.18	55.00	54.72	117°42'13"

**GPS Control Stations**  
MTM Coordinates, Zone 9, NAD83 (CSRS)

STATION	NORTHING	EASTING	COMBINED SCALE FACTOR	ORTHOMETRIC HEIGHT
200	5183075.467	344077.656	0.999623	265.54
201	5183073.253	344241.115	0.999623	265.40

Coordinates were derived from GPS observations using the Precise Point Positioning (PPP) service and are referred to NAD83 (CSRS). Orthometric heights are derived from GPS observations using the (PPP) service and the HTv2 geoid model.

**MTM Coordinates, Zone 9**  
NAD83 (CSRS)

MONUMENTS	NORTHING	EASTING
60	5183256.62	344434.93
61	5183161.69	344475.23
3	5183135.54	344534.21
68	5182796.41	344268.29
6	5182866.05	344177.53
7	5182914.23	344140.54
70	5182907.47	344117.47
9	5182866.62	344062.43
11	5182932.18	343969.54
12	5182925.95	343977.86
13	5182952.49	343967.36
14	5182937.54	343915.88
15	5182918.97	343882.38
77	5183014.37	343762.67
17	5183153.70	343741.77

RE: Section 38, Canada Lands Surveyors Regulations  
CERTIFIED CORRECT  
On the \_\_\_\_ day of \_\_\_\_\_ 2010  
(Surveyor) C.L.S. (Provincial Commission).  
Project : 201 - XX - XXX  
File : S482X1 - XXXXX  
Checklist : XXX

**(OPTIONAL)**  
(Surveyor) C.L.S.  
(Address)  
TEL : 000-000-0000  
FAX : 000-000-0000  
REG. No. XXX