

PLAN OF SURVEY OF LOTS 717, 718, 719(ROAD), 720(ROAD) AND 721(ROAD)
TZEACHTEN INDIAN RESERVE NO. 13
NEW WESTMINSTER DISTRICT
BRITISH COLUMBIA

BCGS 92H.011
SCALE 1:400
0 5 10 20 30 40 Metres
ALL DISTANCES ARE IN METRES AND ARE HORIZONTAL GROUND

THE PLOT SIZE THAT WILL PROVIDE TRUE SCALE AND OPTIMUM READABILITY FOR THIS PLAN IS 560MM BY 864MM

LEGEND:

- STANDARD B.C.L.S. IRON POST FOUND
- STANDARD B.C.L.S. IRON POST PLACED
- STANDARD B.C.L.S. LEAD PLUG PLACED
- △ SURVEY CONTROL / GNSS POINT PLACED
- BCGS DENOTES BRITISH COLUMBIA GEOGRAPHIC SYSTEM
- LTO DENOTES LAND TITLE OFFICE
- RE-EST DENOTES RE-ESTABLISHED
- NF DENOTES NO EVIDENCE FOUND
- LANDS DEALT WITH BY THIS PLAN BOUNDED THUS
- - - GCP TRAVERSE LINES SHOWN THUS
- ALL MONUMENTS ARE ACCOMPANIED BY A TRIANGULAR WOODEN REFERENCE POST

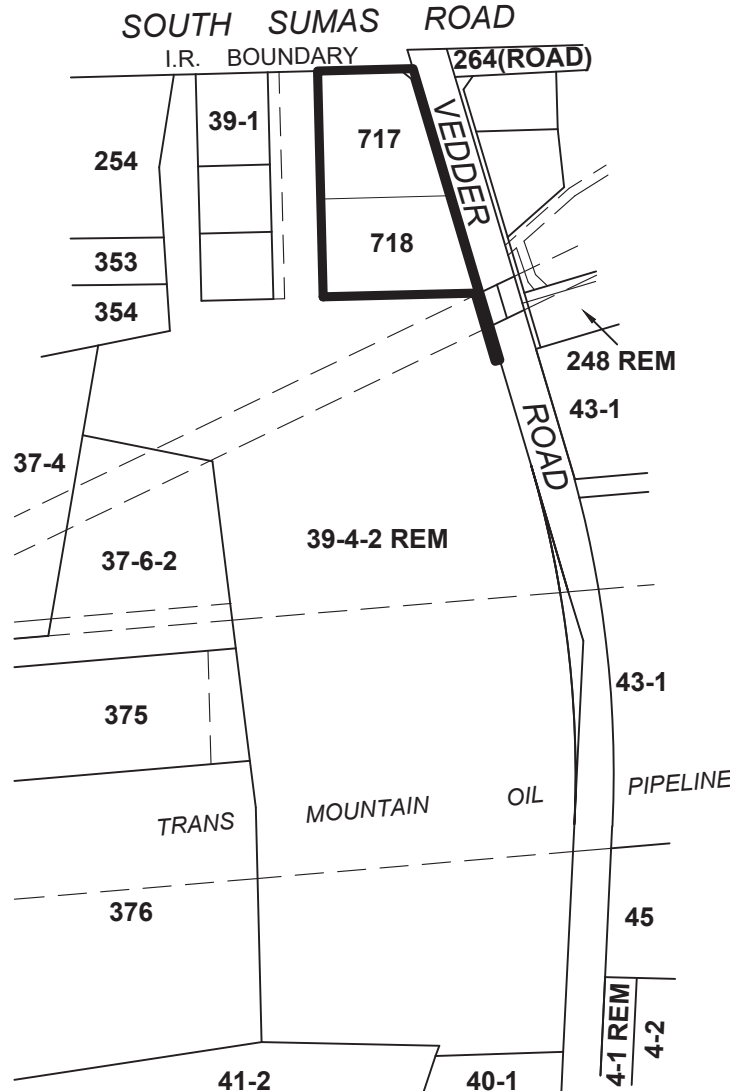
BEARINGS ARE NAD83 (CSRS) UTM GRID DERIVED FROM DIFFERENTIAL CARRIER PHASE GNSS OBSERVATIONS AT GCP1 AND GCP2 AND ARE REFERRED TO THE CENTRAL MERIDIAN OF UTM ZONE 10 (123°).

THIS PLAN SHOWS THE HORIZONTAL GROUND LEVEL DISTANCES IN METRES. TO COMPUTE GRID DISTANCES MULTIPLY GROUND LEVEL DISTANCES BY THE AVERAGE COMBINED SCALE FACTOR OF 0.9996706.

THIS SURVEY WAS EXECUTED DURING THE PERIOD OF NOVEMBER 26, 2021 TO JANUARY 10, 2022 BY K.M. POWER BCLS, CLS 1546 AND THE PROJECT AND SURVEY RESPONSIBILITIES WAS SUBSEQUENTLY ASSUMED BY EDWARD EATON BCLS, CLS 1480 ON JANUARY 24, 2022.



KEY PLAN
NOT TO SCALE



COORDINATE TABLE				
DATUM: NAD83 (CSRS) 2002.0 UTM ZONE 10 NORTH				
POINT	UTM NORTHING	UTM EASTING	ELLIPSOID HEIGHT	COMBINED SCALE FACTOR
GCP1	5441121.36	575927.24	0.69	0.99967071
GCP2	5440981.94	576012.25	3.08	0.99967049

*COORDINATES FOR GCP1 AND GCP2 ARE DERIVED BY PPP

RE: SECTION 38, CANADA LANDS SURVEYORS REGULATIONS
CERTIFIED CORRECT

FILE No. SM8210-08058
PROJECT No. 2021-10-221
CHECKLIST NUMBER: 9030

CITY OF CHILLIWACK

THIS PLAN LIES WITHIN THE
FRASER VALLEY REGIONAL DISTRICT.



Chilliwack office
6-7965 Venture Place
Chilliwack, B.C. V2Y 0K2
Ph.: (604) 792-4264
www.vectorgeomatics.com

FILE NO.: CW2101278 FB: C413/23-26
DRAWING No.: CW2101278P1 Date: 2022-02-24