

FIELD NOTES OF
RE-ESTABLISHMENT AND RESTORATION OF MONUMENTS
SHOWN ON PLAN 88581 CLSR (PLAN 3864 LTO)

WITHIN

(FOR LOCATION DESCRIPTION SEE CHAPTER 2.2, GUIDELINES FOR
PREPARATION OF SURVEY PLANS)

SCALE 1:1000



The plot size that will provide true scale and optimum
readability for this plan is 21.6 cm by 27.9 cm.

Field work was executed on July 23rd, 2014
by *Surveyor*, CLS.

CANADA LANDS SURVEYS RECORDS
F.B.

DATE :

*This specimen field notes depict a
survey pursuant to Chapters 2.2. and
3 of the National Standards for the
Survey of Canada Lands.*

These field notes show:

- *re-establishment and restoration
of monuments.*

LEGEND:

Bearings are UTM Grid (Zone 11) derived from the bearing of 104° 00' 15" of the line between CLS77
posts at the SW corner of Lot 1779 and the SE corner of Lot 1781 as shown on plan 88581 CLSR.

This plan shows horizontal ground level distances in metres.

Coordinate Control Monument (CCM) found ----- ▲

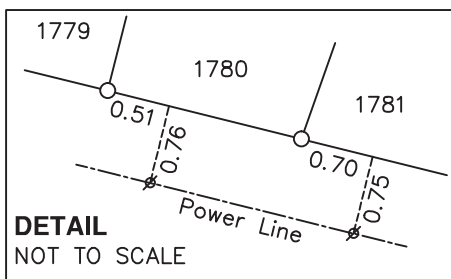
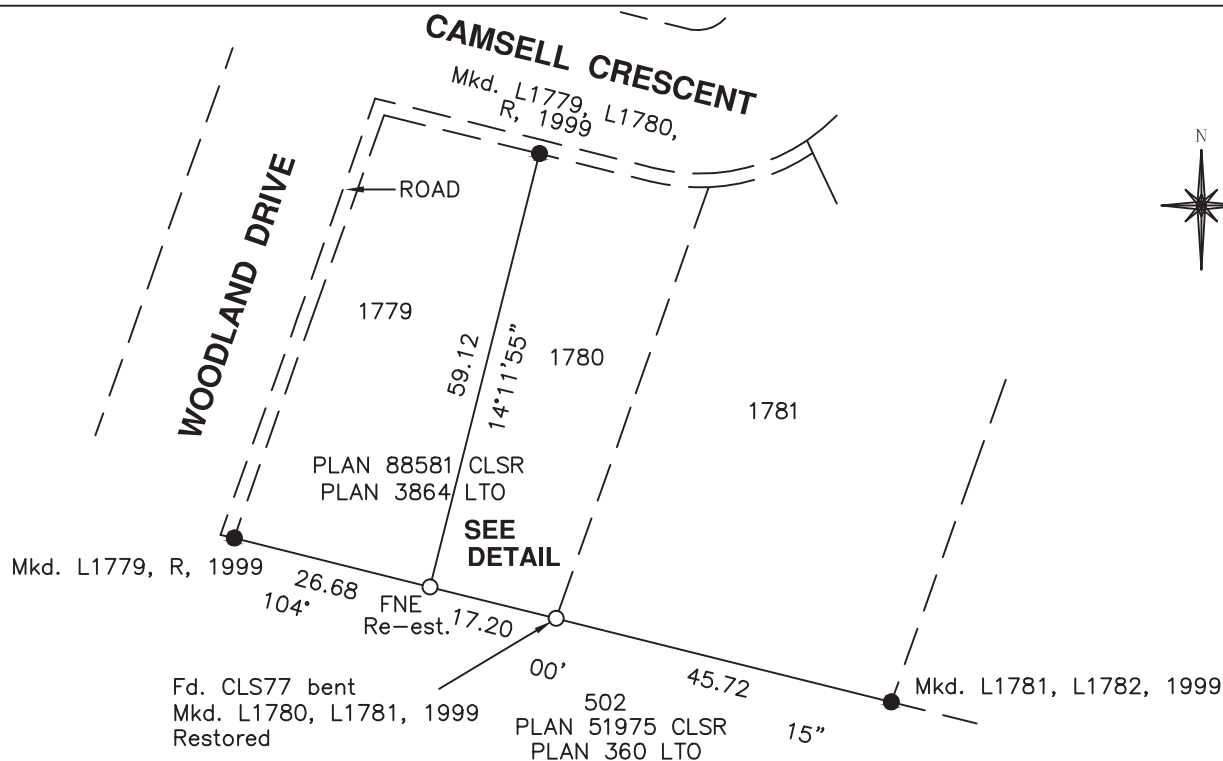
CLS '77 posts found ----- ●

CLS '77 posts placed ----- ○

Power poles and powerline are shown thus ----- ⚡ -----

Placed CLS 77 post marked with lot numbers

S P E C I M E N O N L Y



RE: Section 38, Canada Lands Surveyors Regulations

CERTIFIED CORRECT

On the _____ day of _____ 2014

(Surveyor) C.L.S. , (Provincial Commission).



FILE No.

PROJECT No.